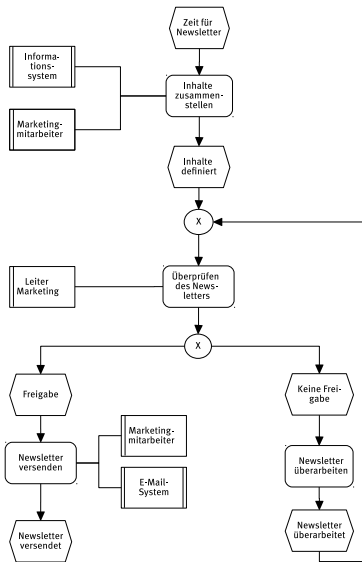


Einführung in die Wirtschaftsinformatik

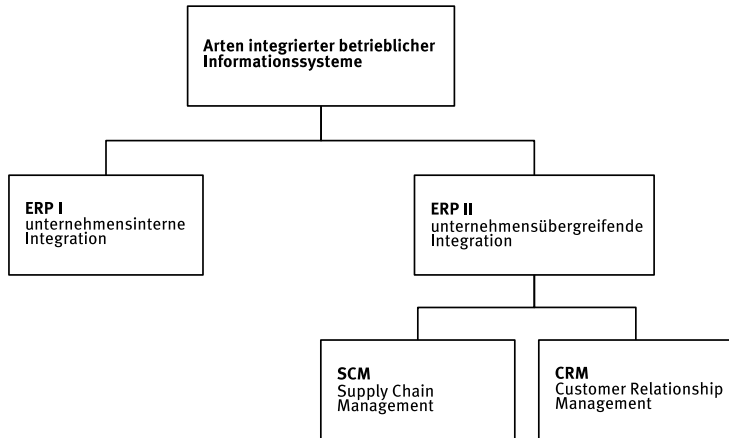
Kapitel 7 – Integrierte betriebliche Informationssysteme

M. A. Bächle, S. Daurer, A. Kolb

Geschäftsprozess für den Newsletterversand



Arten integrierter betrieblicher Informationssysteme



Auftrag (Order) in ADempiere

Menu (9) Order Info x Sales Order x

Order

Order Line

Order Tax

Client* GardenWorld

Document No 50001

Description

Organization* HQ

Order Reference

Target Document Type* Standard Order

Date Ordered* 02/07/2012

Business Partner* Joe Block

Partner Location* Hartford

Usuario

Self-Service

Date Promised* 02/07/2012

Invoice Partner* JoeBlock-Joe Block

Invoice Location* Hartford

Invoice Contact

Delivery

Delivery Rule* Availability

Warehouse* HQ Warehouse

Delivery Via* Pickup

Freight Cost Rule* Freight included

Priority* Medium

Drop Shipment

Invoicing

Invoice Rule* Immediate

Price List* Standard

Sales Representative* GardenAdmin

On Credit

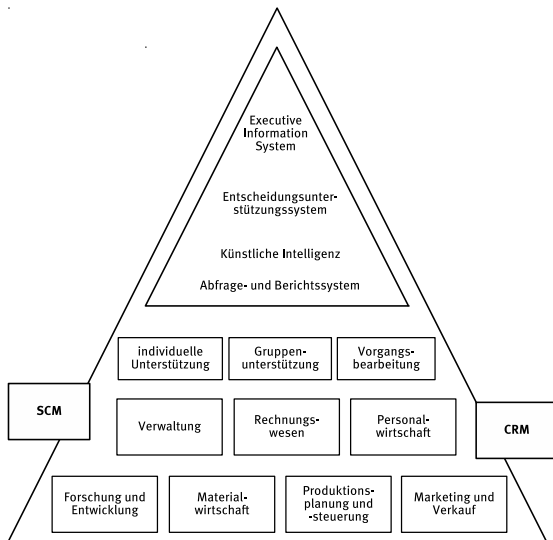
Promotion Code

Currency* USD

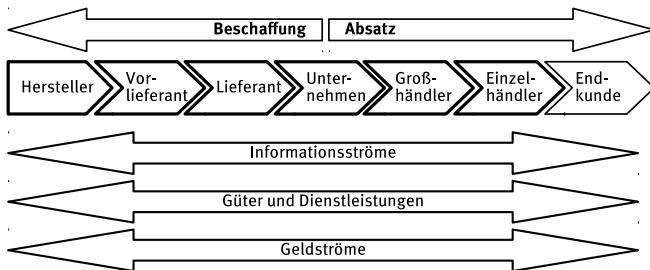
Discount Printed

Payment Term* 30 Days Net

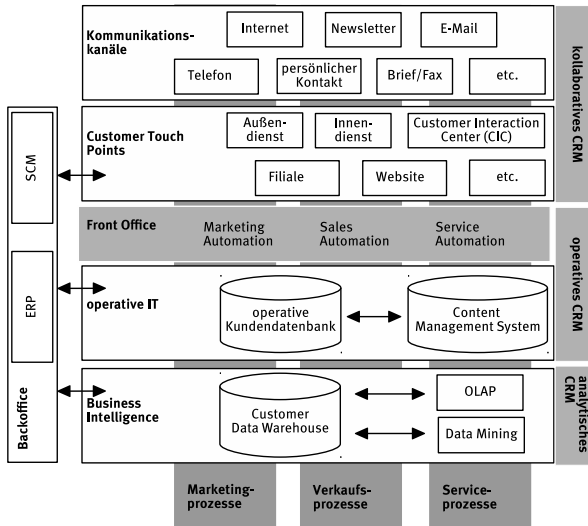
ERP II



SCM in einem Handelsunternehmen



CRM-Arten



UBIS-Schichtenmodell (mit Beispielen)

